

Over the Moon Card

Featuring the Birch Stamp

Renee Daley

703-620-1577

Stampknowhow@verizon.net

www.StampKnowHow.com



Measurements for your Cardstock

- (2) Whisper White paper pieces 4"x 5 1/4"**
- (2) Black Foil or Black Glimmer paper 4 1/8" x 5 3/8"**
- (1) Basic Black card stock cut at 4 1/4" x 11" and scored at 5 1/2" (for card base)**
- Cut Whisper White piece with largest square Stitched Shapes framelit on die cut machine**
- Cut Balmy Blue piece with largest oval Stitched Shapes framelit on die cut machine**

Over the Moon Card

Featuring the Birch Stamp

Renee Daley

703-620-1577

Stampknowhow@verizon.net

www.StampKnowHow.com



Card Front

1. Using the Stamparatus, stamp the Birch Background stamp with memento ink on one of the large whisper white pieces.
2. Attach the stamped Birch piece to your black foil using multipurpose glue.
3. Attach the two layers to the basic black card front with multipurpose glue.
4. Stamp the cow image with memento ink on the Stitched rectangle shape positioning near the top.
5. Stamp the sentiment, "You are utterly fantastic", below the cow image in black memento ink.
6. Color the cow with Stampin' Blends markers. See supply list for the colors that were used on this card.
7. Glue the cow image to the Balmy Blue oval shape.
8. Attach the cow image to the card front using dimensionals.

Over the Moon Card

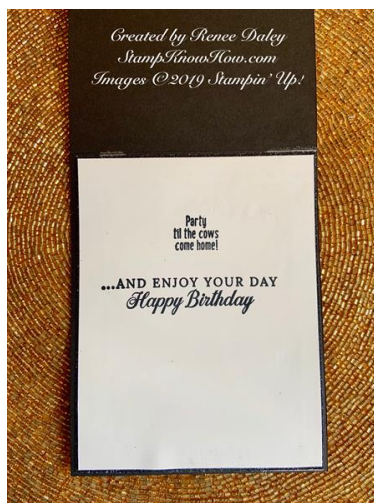
Featuring the Birch Stamp

Renee Daley

703-620-1577

Stampknowhow@verizon.net

www.StampKnowHow.com



Inside the Card

1. Using the Stamparatus, line up the "Party Until the Cows Come Home" and "Happy Birthday" sentiments so they are straight and stamp them on the Whisper White large piece of card stock. (The Happy Birthday sentiment is from the retired Stampin' UP "Make a Wish" stamp set.)
2. Glue the whisper white piece to the black foil (or glimmer paper).
3. Glue both layers to the inside of the card.

Over the Moon Card

Featuring the Birch Stamp

Renee Daley

703-620-1577

Stampknowhow@verizon.net

www.StampKnowHow.com



[Over The Moon Cling Stamp Set - 149331](#)

Price: \$20.00



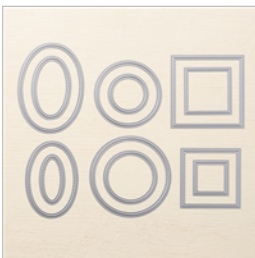
[Birch Cling Stamp - 149256](#)

Price: \$16.00



[Birch Wood-Mount Stamp - 149259](#)

Price: \$20.00



[Stitched Shapes Dies - 145372](#)

Price: \$30.00



[Whisper White 8-1/2" X 11" Cardstock - 100730](#)

Price: \$9.75

Over the Moon Card

Featuring the Birch Stamp

Renee Daley

703-620-1577

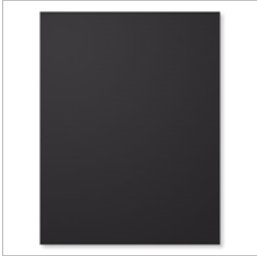
Stampknowhow@verizon.net

www.StampKnowHow.com



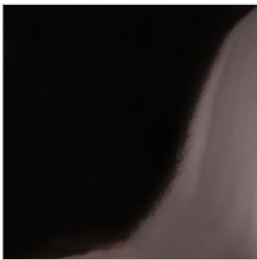
[Balmy Blue 8-1/2" X 11" Cardstock - 146982](#)

Price: \$8.75



[Basic Black 8-1/2" X 11" Cardstock - 121045](#)

Price: \$8.75



[Black Foil Sheets - 147898](#)

Price: \$5.00



[Tuxedo Black Memento Ink Pad - 132708](#)

Price: \$6.00



[Multipurpose Liquid Glue - 110755](#)

Price: \$4.00

Over the Moon Card

Featuring the Birch Stamp

Renee Daley

703-620-1577

Stampknowhow@verizon.net

www.StampKnowHow.com



[Stampin' Dimensionals - 104430](#)

Price: \$4.00



[Petal Pink Light Stampin' Blends Marker - 146866](#)

Price: \$4.50



[Pineapple Punch Light Stampin' Blends Marker - 147029](#)

Price: \$4.50



[Basic Black Light Stampin' Blends - 147940](#)

Price: \$4.50



[Balmy Blue Light Stampin' Blends Marker - 148540](#)

Price: \$4.50

Over the Moon Card

Featuring the Birch Stamp

Renee Daley

703-620-1577

Stampknowhow@verizon.net

www.StampKnowHow.com



[Ivory Stampin' Blends Marker - 144606](#)

Price: \$4.50